

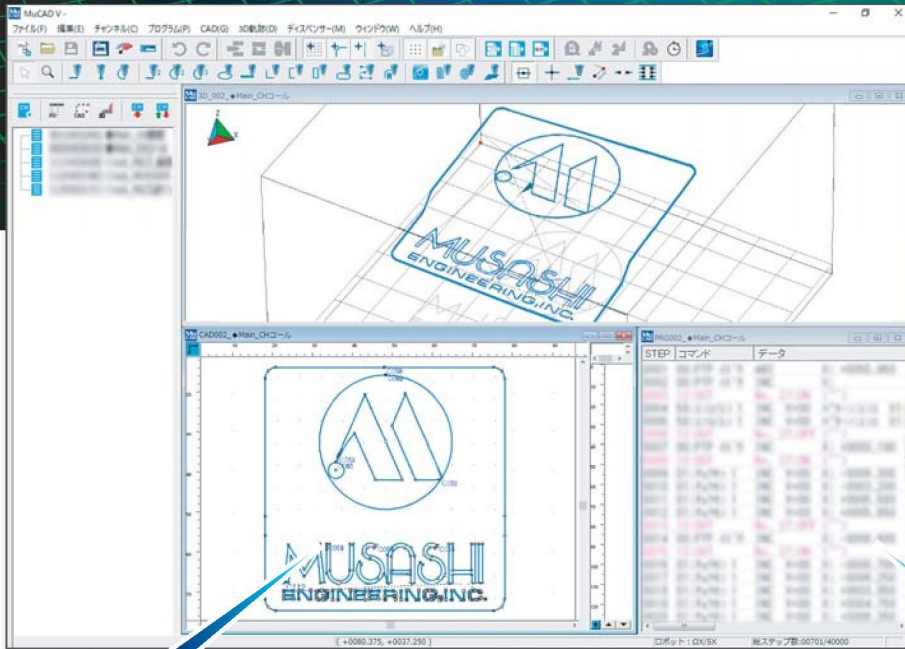
MuCAD VTM

Concentration of **No.1**
dispensing know-how!

- Less editing time
- Intuitive drawing of dispensing patterns
- Easy editing for beginners



Windows 10 compatible
Japanese/English/Chinese/Korean/Thai/French



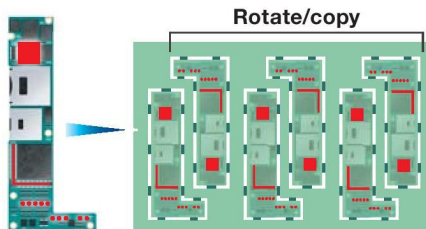
Enter drawing

Use the mouse to create the "drawing" program to be dispensed



Handy function Create staggered layout or multi-cavity programs

Works straight away with various work layouts.
Includes "copy/rotate/flip" function for dispensing programs.

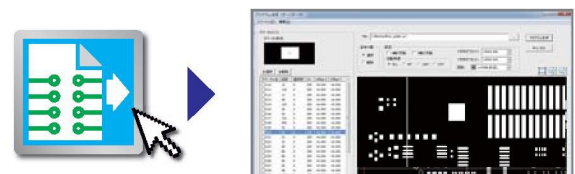


Entry by command

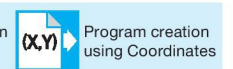
Create accurate programs by entering values



New Function Automatic program creation for application from Gerber data



Automatic program creation also available with other data types



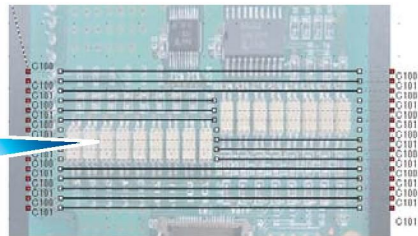
Useful functions to reduce editing time

◆ Cut out dispensing prohibited areas



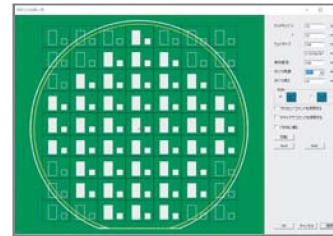
Includes cut intermediate dispense area function to separate dispensing into dispense areas and prohibited areas.

Cut intermediate area



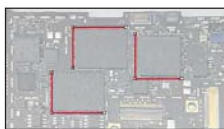
◆ Pattern generator function

Configure any device layout on wafers. Helps to reduce programming time significantly.



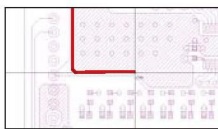
◆ Load sketch

JPEG/BMP



Loading a photo of the work piece allows the dispensing pattern to be entered over the image.

DXF/Gerber data



MuCAD drawing tool automatically snaps DXF, Gerber and other data as pattern data.

◆ Drawing by hand function



Programs can be created intuitively by hand (free line drawings).

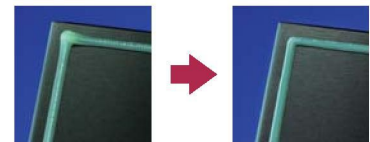
Mu-Sketch



◆ Synchro Speed™ function PAT.P



The line width can be maintained at constant even when moving through a corner.



System requirements

OS	Windows® 10, Windows® 8.1, Windows® 7
CPU	Pentium 4 2 GHz equivalent or faster
Memory	512 MB or more (1 GB or more recommended)
Display	XGA (1024×768) or higher resolution
Hard disk	Free space of 100 MB or more
USB port	USB port x1 (SHOTMASTER QX/SX series, CROSSMASTER QX/SX series)
Serial port	Serial port x1 (SHOTMASTER DS/DSS series, other older models) • Separate serial port x1/unit required when connecting the dispenser. • USB serial converter can be used.
Applicable robots	SHOTMASTER QX/SX series, SHOTMASTER DS/DSS series, CROSSMASTER QX/SX series, also compatible with other older models

※ This software is protected by the Copyright Act, and may not be copied or modified without prior consent of Musashi Engineering, Inc.
 ※ Microsoft Windows is a registered trademark of Microsoft Corporation.

© Copyright 2018 Musashi Engineering, Inc.



Safety precautions

Please read the instruction manual carefully before use to ensure correct and safe usage.

*These specifications are subject to change without any notice.
 *The copyright of this catalog belongs to our company. Reproduction and distribution of the pictures, illustrations and any other information in this catalog to any other media without prior written permission are strictly prohibited; doing so will result in copyright infringement.

MUSASHI ENGINEERING, INC. (headquarters) is certified and registered according to the ISO 9001 Quality Management System and the ISO 14001 Environmental Management System.



Váš dodavatel Musashi pro Česko a Slovensko



Amtech
dispensing

AMTECH, spol. s r.o.

Tel.: +420 541 225 215

E-mail: davkovani@amtech.cz

Web: www.amtech-dispensing.cz

